

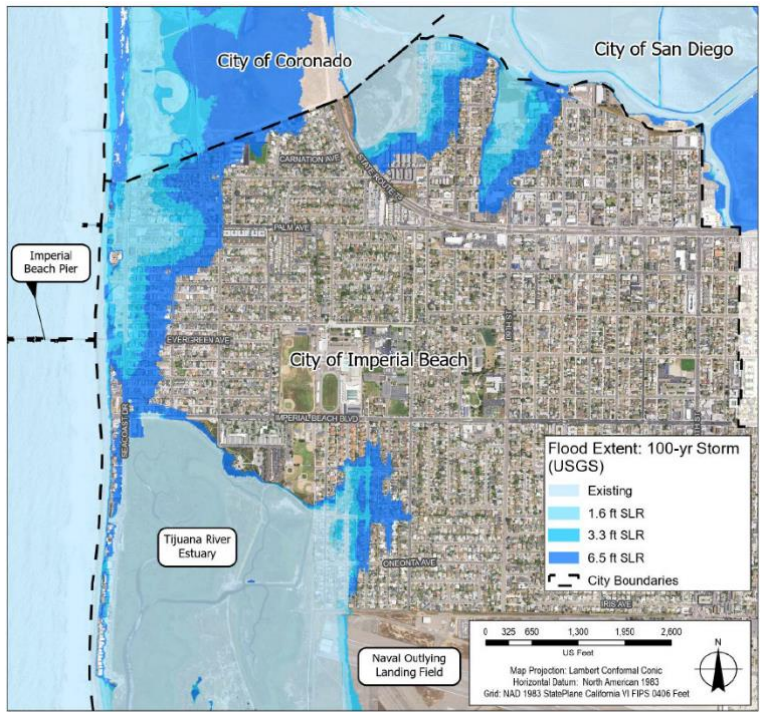


Climate and Community Resilience

Chris Helmer
City of Imperial Beach

1

Vulnerability Assessment



2



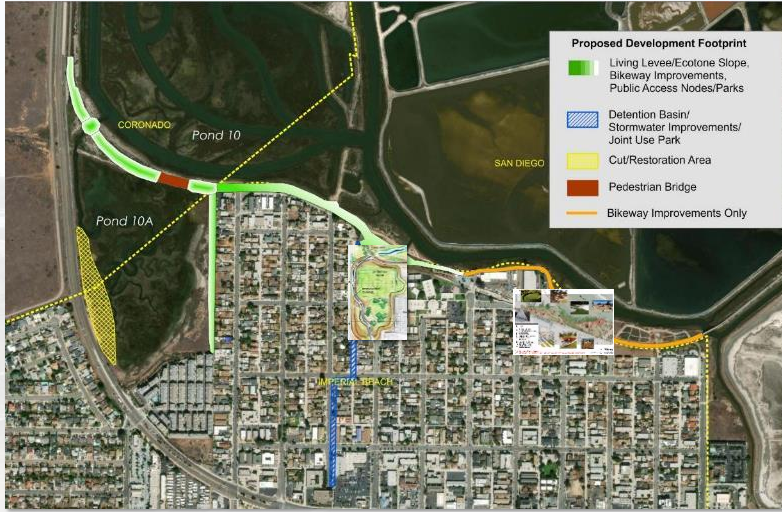
Living Levee with Ecotone Slope



Multi-Purpose Detention Basin & Tidal Gate



Bikeway Improvements – Kumeyaay Park



3



4

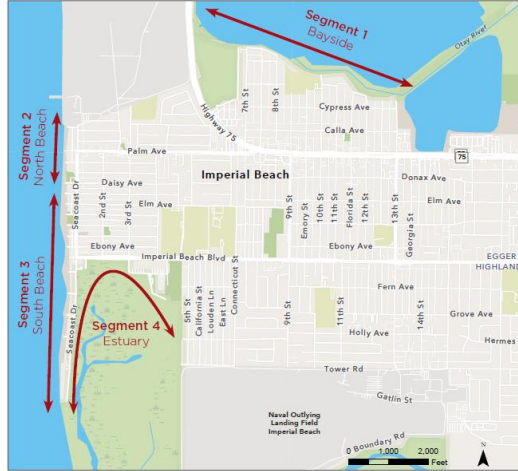
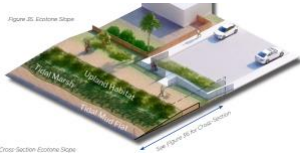


Imperial Beach COMMUNITY RESILIENCE PLAN

Beach Nourishment



Ecotone Slopes



Pond 20 Wetland Mitigation Bank



<https://www.ibcommunityresilience.com/>

5



Beach Nourishment

- SANDAG – Regional Beach Sand Projects
- SCoup – Sand Compatibility and Opportunistic Use Program
- Army Corps – Silver Strand Shoreline Project
- Special Projects – Dredging projects in San Diego Bay or Tijuana River area

6



Figure 19 Street Ends along Seacoast Drive

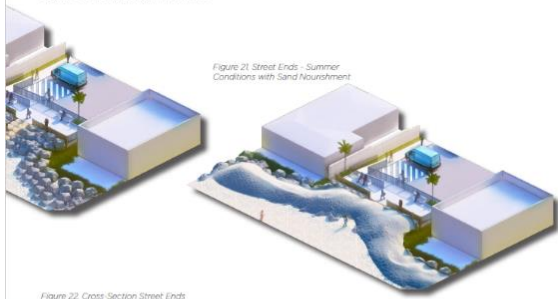


Figure 21 Street Ends - Summer Conditions with Sand Nourishment

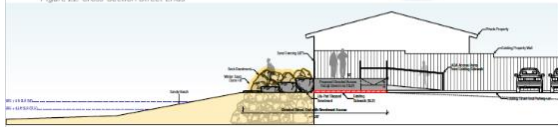


Figure 22 Cross Section Street Ends

PUBLIC REVIEW DRAFT

27

Community Resilience Plan



Street Ends Resiliency

7



Figure 23 Cobble Berm + Ecotone Slope

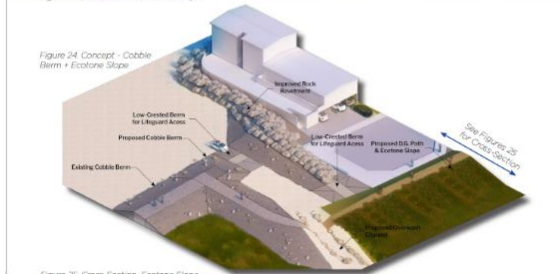


Figure 24 Concept - Cobble Berm + Ecotone Slope

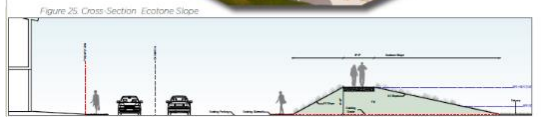


Figure 25 Cross Section Ecotone Slope

PUBLIC REVIEW DRAFT

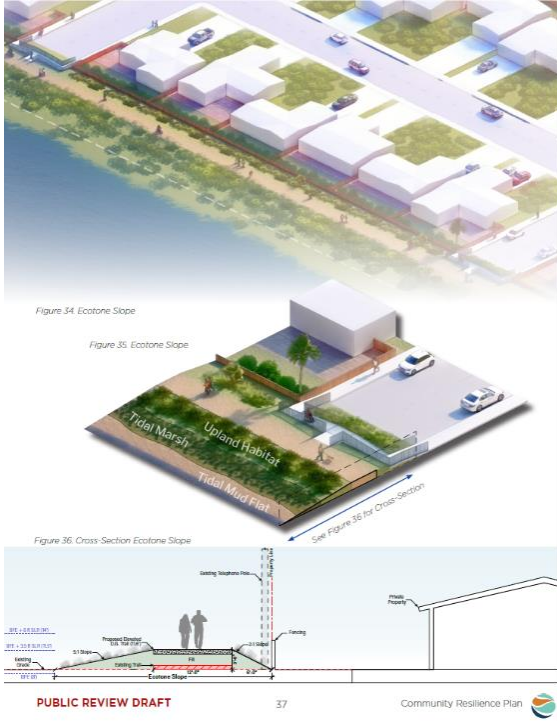
29

Community Resilience Plan

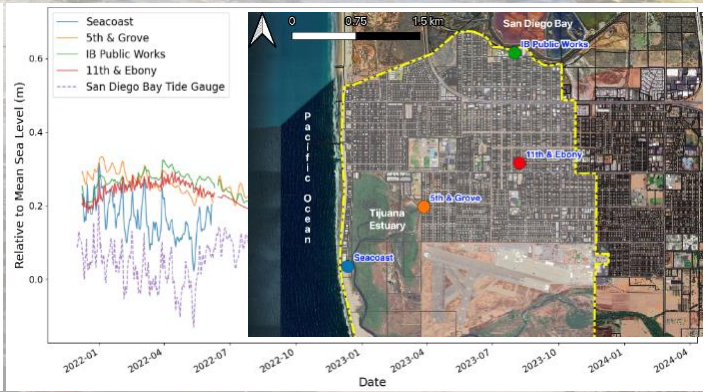
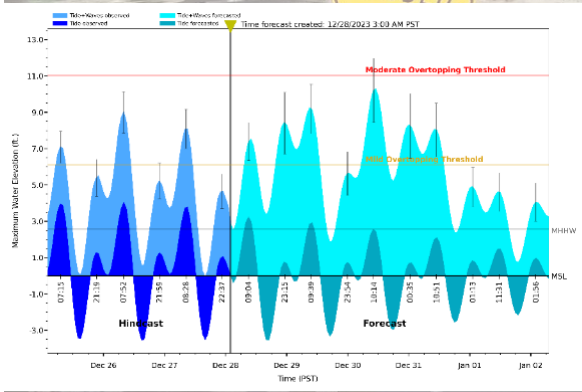


Seacoast Drive Resiliency

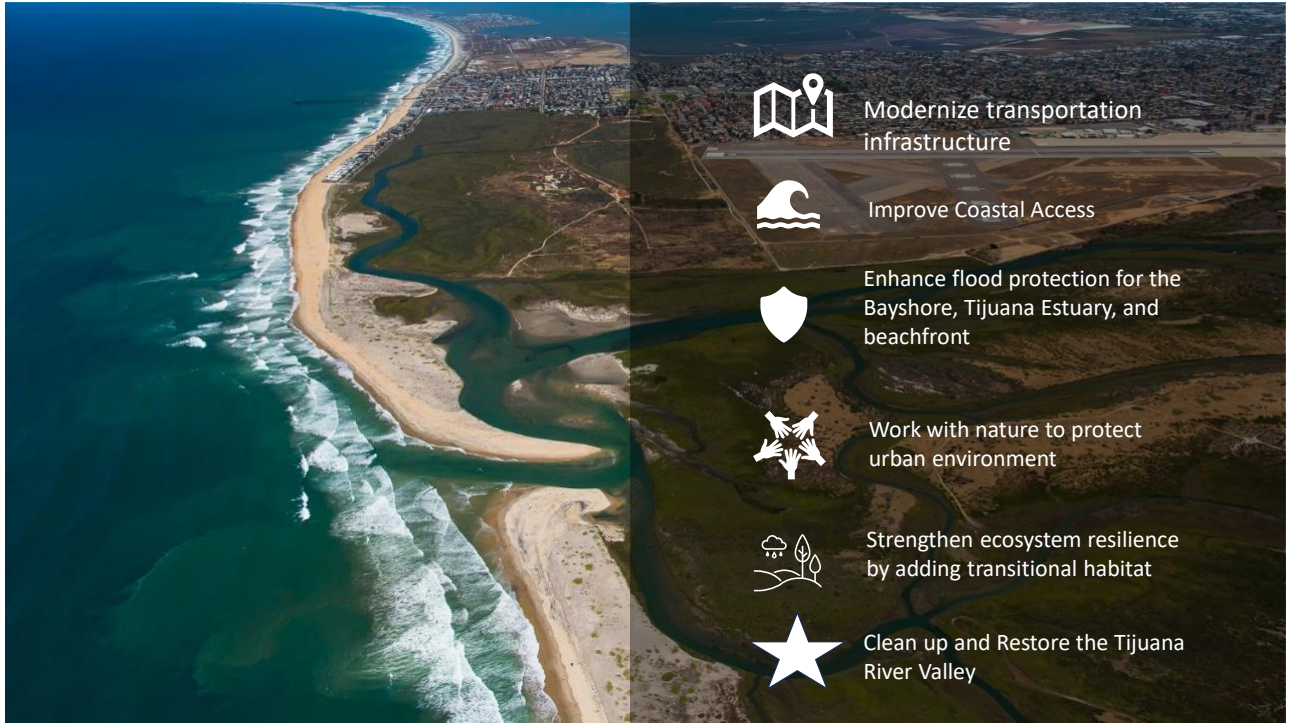
8



9



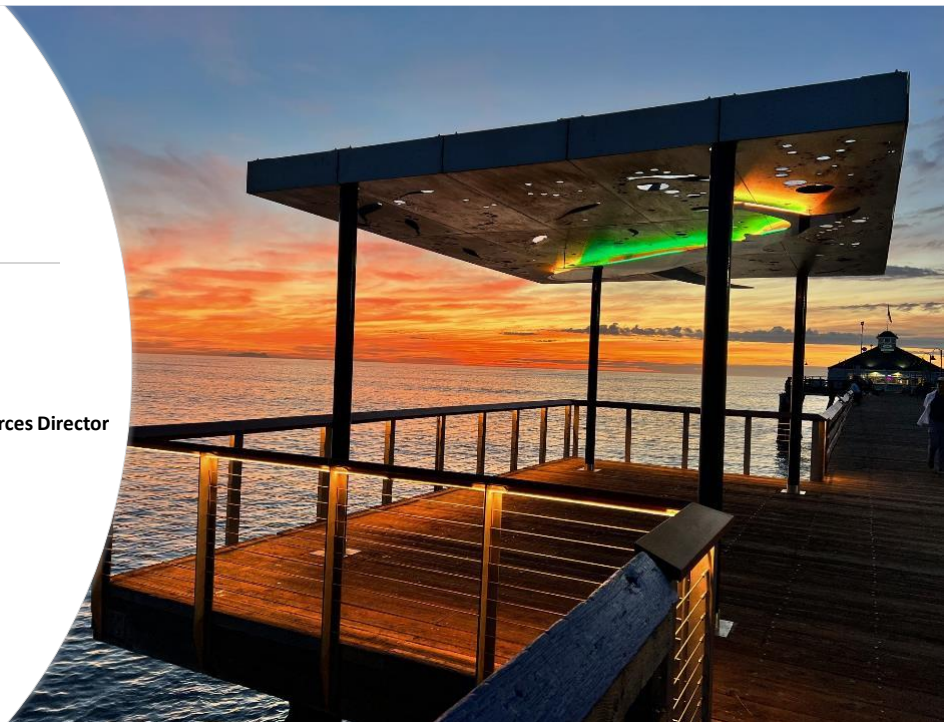
10



11

Thank you

- Chris Helmer
- Environmental and Natural Resources Director
- chelmer@imperialbeachca.gov



12